

VISATEC



Putting people in a professional light



VISATEC®
For Creative Imaging.

VISATEC

Outstanding quality and service



VISATEC monolights are quality products developed by Bron Elektronik AG in Allschwil in Switzerland. Since the 1950s, our company has stood behind the name broncolor, the world's leading brand of flash systems – in other words: the best light in photography.

Professional photographers around the globe depend on the precision, quality, reliability and innovation of our products. More than 90% of our production is sold outside Switzerland, marketed by specialised retailers in 60 countries. In addition, more than 100 customer service locations ensure that our customers can count on fast and excellent service anywhere in the world.

To meet the many different lighting requirements of professional photographers, in 1994 Bron Elektronik began offering not only broncolor but also a further brand: VISATEC.

The Bron heritage

VISATEC equipment contains all the innovation and experience of broncolor products. While equal in quality to the broncolor benchmark, VISATEC is a simpler system in terms of functionality. The smaller VISATEC bayonet also means lower production costs for accessories. VISATEC has clearly been a success: in just a few years the system has achieved a considerable market share, thanks not only to its perceptible quality but also to its attractive price/performance ratio.

Warranty included

All VISATEC units conform to a high standard of quality, backed up by a two-year factory warranty. The only exceptions are flash tubes, protecting glasses and parts subject to wear. For more details please consult the conditions on your VISATEC warranty card.



Outstanding in the studio and on location

With VISATEC, professional and portable flash and monolight equipment is no longer a matter of price, but simply of common sense. These units are easy to set up and can quickly be realigned to new positions.

A compact selection.

The VISATEC system consists essentially of two groups of monolights with different power ratings: VISATEC LOGOS and VISATEC SOLO.

Putting your pictures in the best light.

For portraits in particular, VISATEC lets you create very subtle differentiation in your lighting. Thanks to its uncomplicated operation and reliability, the photographer and model are not distracted by technology. The result: a relaxed atmosphere and an intimate working situation – the best possible conditions for portraiture at the highest level.

But VISATEC also ensures optimum lighting for fashion and catalogue photography in the studio. Its sophisticated technology, with short recharging times and stable flash output, lets you make strong images. A comprehensive range of accessories helps you express your creative ideas and concepts.

No synchro cable.

The VISATEC trigger eliminates the need for a cumbersome synchronisation cable between the camera and flash unit. The trigger attaches to the accessory shoe on the camera like a conventional flash unit. When the shutter is actuated, a beam of infrared light – invisible to the human eye – triggers each VISATEC compact flash unit via its infrared-sensitive photocell.

True colour reproduction.

The flash tubes and protecting glasses for these monolights are UV-coated, optimising the correction of colour temperature for daylight film and absorbing UV radiation. The flash tubes and modelling lamps use plug-in mounts and can be replaced by the photographer.

Everything in view.

The simpler the operation, the greater the creative possibilities. That's why VISATEC monolights are deliberately designed for user-friendliness.

Radio frequency wireless remote triggering.

Using the new RFS technology (Radio Frequency System) the LOGOS units can be easily triggered wirelessly and flash controlled via communication with the studio software.



VISATEC LOGOS 800/1600 and 800/1600 RFS

The convenient monolights



Controls and displays

1. Sync socket (when required, usable as connection socket for computer link)
2. Sync socket
3. Photocell on/off
4. Modelling light on/off
5. Test release, ready display green
6. Connection socket for mains cable
7. Fuse
8. Energy control up/down
9. Mains switch on/off
10. Digital flash energy display
11. Auxiliary functions (aux)
12. Operating mode modelling light
13. Flash sequence
14. Charging dimmer
15. Buzzer
16. Slow charge
17. Appliance address (for LOGOS 800 RFS / LOGOS 1600 RFS)
18. Photocell

As the complexity of professional photography increases, so also do photographers' expectations in terms of lighting technology. In the development of the convenient VISATEC LOGOS 800/1600 monolights with computer connection and radio triggering, one consideration was paramount: making your work – in the studio or on location – as easy as possible, whether you decide on digital or conventional photography.

Refined technology

The front panel of the new VISATEC LOGOS 800/1600, with its illuminated LED display and clearly organised keypad, is extremely easy to use. Output can be precisely controlled in 1/10 f-stop or whole-stop increments, over a 4 f-stop range.

The LOGOS 1600 unit delivers f/64 with a standard reflector at 1 m (3.25 ft) (ISO 100), the LOGOS 800 one stop less. The halogen modelling light (150 W) can be switched to six different proportionality settings. In proportional mode, the modelling light matches the selected flash output (WYSIWYG = what you see is what you get). Furthermore the modelling light is compatible with all VISATEC flash systems and their various output levels. The unit discharges internally when output is reduced. Or, in plain English, every flash fires at the right output.

A built-in monitoring system generates an audible signal reminding you to fit the correct modelling lamp when you change mains voltage.

Always in the picture

A visible signal (modelling light dimmed or boosted during charging) and an audible warning (ready buzzer) keep you informed about correct operation of the system. For long flash series, a cooling fan prevents overheating of the unit.



Fran Collin, USA

Simply faster

VISATEC LOGOS makes your work easier in many ways: The VISATEC trigger can fire multiple units wirelessly via their built-in IR receivers. The coated flash tube ensures faithful colour reproduction, and uses a plug-in mount so you can change it yourself. The unique bayonet mounting system lets you quickly exchange light shapers and rotate them through a full 360°. Finally, front attachments can now be mechanically locked in place.

Special effects and multiple flashes

When you are working with special effects and multiple flashes, VISATEC LOGOS gives you the capability of programming a predefined number of flashes (up to 50 discharges). For digital images in particular, the excellent repeatability will impress you.

Voltage flexibility

VISATEC LOGOS 800/1600 units are available in two versions: for 100–120 V only, and as dual-voltage units optimised for 200–240 V mains voltage.

More professional, everywhere

For fashion and people shots, location work, or digital imaging situations – VISATEC LOGOS is ideal for every flash photography application and the perfect tool for every photographer.

Accessories à la carte

We offer a comprehensive range of accessories for the new VISATEC LOGOS 800/1600. Perfectly matched to the flash unit, their versatility lets your lighting creativity shine through. The protective cap (included as standard) and protecting glass protect the flash tube and modelling light from damage. VISATEC LOGOS equipment is also available in kits containing one, two or three monolights plus accessories.

VISATEC RFS – Radio Frequency System

Wireless remote control



With the new RFS technology of the VISATEC LOGOS 800/1600, you can trigger your flash unit from as far as 30 meters (98.4 ft) away with no connecting cable; for digital photography, the RFS interface is a convenient way to control imaging from your Mac or PC. You can select from several digitally coded radio channels.

Complete radio remote control.

The VISATEC RFS system means you no longer need connecting cables for remote control, and can also get rid of that dreaded «tripwire» (your synchro cable). Every function can now be radio-controlled using the VISATEC RFS transceiver. For users of digital systems – whether Mac or PC – this forges the last link in the chain of completely computer-controlled imaging. VISATEC RFS makes your life easier for digital or analogue imaging, allowing you to concentrate entirely on the picture. The new technology is reliable, convenient and cost-effective.

Everything under control.

VISATEC RFS lets you control all the important functions of your VISATEC LOGOS compact units, using a self-explanatory, user-friendly program. Each individual compact unit is identifiable and can be assigned a separate address. With on-screen operation, as many as four separate lighting situations can be stored.

The ultimate in radio triggering.

This modern solution replaces the synchro cable and infrared trigger and offers definite advantages. The VISATEC RFS transmitter slides into the camera's accessory shoe and locks in place. Flash synchronisation is accomplished through either the shoe's centre contact or a connecting cable to the camera. The miniature transmitter offers 10 digitally coded channels – a significant advantage over previous flash triggering systems. VISATEC RFS is easy to use.

A power switch was deliberately omitted, since the lithium button cell has a service life of about five years. For that entire period, the transmitter is always ready to use. Test flashes can be triggered at the push of a button.

Another advantage of VISATEC RFS over existing IR synchronisation technology is its long transmission distance (range up to 300 m (98.4 ft), operating distance 30 m (98.4 ft)). Transmission time is less than 1/1000 s.

Powerbox 900 by bron – the mains socket for en route.

The Bron Powerbox 900 is a mains independent power supply with a rechargeable lead battery. Up to 900 J (Ws) can be accessed, which means that, for example 3 monolights each with 300 J can be connected. Should only one monolight with 300 J be connected, approximately 210 flashes can be triggered at full power output and slightly more than 1500 flashes at a minimum power output, respec-

tively. When working with modelling light, the amount of flashes is reduced accordingly. Maximum capacity for modelling light is 450 W.

The Powerbox can be charged quickly and easily via charger.



VISATEC SOLO B

Compact technology



With its SOLO B, VISATEC offers a state-of-the-art compact system that also meets your highest expectations in terms of quality and price.

Systematically simple

With its complete range of accessories, VISATEC SOLO B is a lighting system that is as carefully designed as it is powerful. The small dimensions of the bayonet and the accessories express the basic philosophy of the system: compact size, high performance, low weight and an attractive price. VISATEC monolights are particularly useful for portrait, wedding and people shots, but they are also ideal for location shooting, since they are so simple to use and easy to transport.

More flash light

The power of this compact and economical lighting system family is astonishing, and many features underscore the professional design of VISATEC SOLO B. Short charging times make fast flash sequences easy. Flash voltage is stabilised to $\pm 1\%$ and guarantees precisely reproducible exposures. The short

flash duration expands your capabilities. The built-in infrared-sensitive photocell can trigger multiple flash units simultaneously and can be switched off. The patented reflector mount simplifies reflector changes.

Modelling light your way

Three operating modes are available for the halogen modelling light: full power, power proportional to flash energy, or dimmed. In the dimmed mode, the modelling light output is reduced during charging; this lets the photographer confirm that all the monolights have fired (flash monitor function). All units incorporate fan cooling.

Built tough

The impact-resistant light-alloy metal housing protects the electronics in tough everyday service. The grey protective cap (included) protects the flash tube and halogen modelling lamp from damage during transport.

VISATEC LOGOS 800 BC with broncolor bayonet



The compact VISATEC LOGOS 800 BC mono-light offers all the desirable product features of the VISATEC LOGOS 800. As the suffix BC implies, this flash unit is compatible with broncolor light shapers.

"Win-win" situation for newcomers and switchers

Since broncolor and VISATEC products are manufactured by the same company, it was a logical step to offer a cost-effective monobloc with the advantages of both brands. That simplifies a seamless transition to the broncolor system.

The finest in technology

When it comes to technology, the LOGOS 800 BC meets very high standards. The front panel offers an illuminated digital display and a clearly organised keypad. Flash output can be controlled over a 4 f-stop range in whole-stop or precise 1/10 f-stop intervals.

Analogue and digital

Excess energy is discharged internally when you reduce the unit's power output, so you always get exactly the amount of light you set. For use with digital cameras, the flash energy is stabilised to $\pm 1\%$ for outstanding repetitive precision.

Handy and convenient

The VISATEC IR trigger lets you release multiple units simultaneously via its built-in infrared-sensitive photocell. The flash tube has a plug-in design for easy replacement by the photographer, and is coated to ensure accurate colour reproduction.

Matching accessories from A to Z

The mechanically interlocking bayonet coupling for **broncolor** accessories is another advantage. It allows quick interchanging of light shapers and 360° shaper rotation, for versatile and creative lighting capabilities.

VISATEC LOGOS BC in a Kit:

- 3 LOGOS 800 units, complete,
- with **broncolor** bayonet
- 1 P-Travel reflector
- 1 set of barn doors for P-Travel
- 1 umbrella reflector
- 1 umbrella, silver, Ø 82 cm
- 1 Pulsoflex C, 70 x 70
- 1 adapter ring for Pulsoflex C
- 1 sync cable, 5 m
- 1 case

VISATEC LOGOS 800 BC – Technical data.

Flash energy	300 J
f-stop at 1 m (3.25 ft), ISO 100	f/45.6 with P 70 reflector
Flash duration t 0.5	1/800 s
Charging time (to 100% of selected energy)	0,3 – 1,2 s
Ready display (at 100% of selected energy)	Visual and audible (deactivatable)
Control range (continuous)	over 4 f-stops in 1/10 f-stop increments
Modelling light	halogen, 150 W
Additional functions	Sequences (flash series) of up to 50 flashes
Flash release	via sync cable, infrared-sensitive photocell (deactivatable), manual release button
Reflector mount automatic	Interlocking rotatable bayonet
Stabilised flash voltage	+/- 1%
Power requirements	100-120 V / 50-60 Hz: 10 A 200-240 V / 50-60 Hz: 6 A
Standards	EC standard 73/23, UL 122
Dimensions	120 x 195 x 276 mm (4,7 x 7,7 x 10,8") (without bracket or umbrella holder)
Weight	2.6 kg (9,5 lbs)

Not available in the USA.



Light control is a challenge for anyone working in photography. The right tools make it much easier to turn complex image concepts into reality.

A fundamental distinction can be made between two different types of light:

- «Hard» (directional) light for sharply delineated shadows and detailed subject reproduction;
- «Soft» (diffuse) light for graduated shadows and smooth reflections.

Light shapers.

Open reflectors, panel lights and spotlights let you put the right light on anything you photograph.

Open reflectors.

These are used for directional light, good detail reproduction, well-defined structures, highlights, etc.

Area lights.

An area light is a light shaper in which light is scattered or diffused through a translucent material.

Spotlights.

Here the light is collimated (directed) by a lens system and then emitted. Shadows are well-defined or tack-sharp. Highlights are small and bleached. They can range in appearance from small and bleached to diffuse.

Quick accessory changes.

A comprehensive selection of accessories can be exchanged quickly and easily using the VISATEC bayonet mount. All reflectors can be rotated 360°, an advantage especially with barn doors and rectangular reflectors.



Frida-Orkid Studio, Indonesia

VISATEC Kits

The complete system for all requirements



VISATEC is a complete system suitable for beginners and experienced pros, as well as a supplement to your existing flash equipment. With its comprehensive range of accessories, it can be adapted individually and economically to every task. All VISATEC monolights are available either one-off or in kits. Even outside the studio, the well-equipped complete kits serve as reliable, easily transportable and high-performance light sources. The kits are available in different voltages.

The RFS Kits include LOGOS RFS mono-lights (instead of the LOGOS units) and 1 transmitter RFS in addition to the existing kit contents.

1. LOGOS Kit 108 / LOGOS Kit 108 RFS

51.044.00 / 51.058.00 230 V
51.045.00 / 51.059.00 120 V
 1 LOGOS 800 incl. flash tube, modelling lamp, protecting glass and grey transport protection cap, mains cable
 1 standard reflector
 1 umbrella, white
 1 umbrella reflector
 1 synchronous cable, 5 m
 1 travel bag

SOLO Kit 108

51.012.00 120 V
51.013.00 230 V
 1 SOLO 800 B incl. flash tube, modelling lamp, protecting glass and grey transport protection cap, mains cable
 1 standard reflector
 1 umbrella, white
 1 umbrella reflector
 1 synchronous cable, 5 m
 1 travel bag

2. SOLO Kit 204

51.132.00 120 V
51.133.00 230 V
 2 SOLO 400 B incl. flash tubes, modelling lamps, protecting glasses and grey transport protection caps, mains cables
 1 standard reflector
 1 set of barn doors
 1 umbrella, white
 1 umbrella reflector
 1 synchronous cable, 5 m
 1 travel bag

3. LOGOS Kit 208 / LOGOS Kit 208 RFS

51.046.00 / 51.060.00 230 V
51.047.00 / 51.061.00 120 V
 2 LOGOS 800 incl. flash tubes, modelling lamps, protecting glasses and grey transport protection caps, mains cables
 1 standard reflector
 1 set of barn doors
 1 umbrella, white
 1 umbrella reflector
 1 synchronous cable, 5 m
 1 travel bag

SOLO Kit 208

51.020.00 120 V
51.021.00 230 V
 2 SOLO 800 B incl. flash tubes, modelling lamps, protecting glasses and grey transport protection caps, mains cables
 1 standard reflector
 1 set of barn doors
 1 umbrella, white
 1 umbrella reflector
 1 synchronous cable, 5 m
 1 travel bag

4. LOGOS Kit 216 / LOGOS Kit 206 RFS

51.054.00 / 51.064.00 230 V
51.055.00 / 51.065.00 120 V
 2 LOGOS 1600 incl. flash tubes, modelling lamps, protecting glasses and grey transport protection caps, mains cables
 1 standard reflector
 1 set of barn doors
 1 umbrella, white
 1 umbrella reflector
 1 synchronous cable, 5 m
 1 travel bag

SOLO Kit 216

51.112.00 120 V
51.113.00 230 V
 2 SOLO 1600 B incl. flash tubes, modelling lamps, protecting glasses and grey transport protection caps, mains cables
 1 standard reflector
 1 set of barn doors
 1 umbrella, white
 1 umbrella reflector
 1 synchronous cable, 5 m
 1 travel bag

5. SOLO Kit 304

51.126.00 120 V
51.127.00 230 V
 3 SOLO 400 B incl. flash tubes, modelling lamps, protecting glasses and grey transport protection caps, mains cables
 1 standard reflector
 1 set of barn doors
 2 Soloflex 60
 1 synchronous cable, 5 m
 1 travel bag

6. LOGOS Kit 308 / LOGOS Kit 308 RFS

51.048.00 / 51.062.00 230 V
51.049.00 / 51.063.00 120 V
 3 LOGOS 800 incl. flash tubes, modelling lamps, protecting glasses and grey transport protection caps, mains cables
 1 standard reflector
 1 set of barn doors
 1 umbrella, silver
 1 umbrella reflector
 1 Soloflex 60
 1 set of honeycomb grids
 1 synchronous cable, 5 m
 1 travel bag

SOLO Kit 308

51.030.00 120 V
51.031.00 230 V
 3 SOLO 800 B incl. flash tubes, modelling lamps, protecting glasses and grey transport protection caps, mains cables
 1 standard reflector
 1 set of barn doors
 1 umbrella, silver
 1 umbrella reflector
 1 Soloflex 60
 1 set of honeycomb grids
 1 synchronous cable, 5 m
 1 travel bag

7. LOGOS Kit 316 / LOGOS Kit 316 RFS

51.056.00 / 51.066.00 230 V
51.057.00 / 51.067.00 120 V
 3 LOGOS 1600 incl. flash tubes, modelling lamps, protecting glasses and grey transport protection caps, mains cables
 1 standard reflector
 1 set of barn doors
 1 umbrella, silver
 1 umbrella reflector
 1 Soloflex 60
 1 set of honeycomb grids
 1 synchronous cable, 5 m
 1 travel bag

SOLO Kit 316

51.122.00 120 V
51.123.00 230 V
 3 SOLO 1600 B incl. flash tubes, modelling lamps, protecting glasses and grey transport protection caps, mains cables
 1 standard reflector
 1 set of barn doors
 1 umbrella, silver
 1 umbrella reflector
 1 Soloflex 60
 1 set of honeycomb grids
 1 synchronous cable, 5 m
 1 travel bag

8. SOLO Kit 232

51.114.00 120 V
51.115.00 230 V
 2 SOLO 3200 B incl. flash tubes, modelling lamps, protecting glasses and grey transport protection caps, mains cables
 1 standard reflector
 1 set of barn doors
 1 umbrella, white
 1 umbrella reflector
 1 synchronous cable, 5 m
 1 travel bag

9. SOLO Kit 332

51.124.00 120 V / 51.125.00 230 V

3 SOLO 3200 B incl. flash tubes,
modelling lamps, protecting glasses
and grey transport protection caps,
mains cables
1 standard reflector
1 set of barn doors
1 umbrella, silver
1 umbrella reflector
1 Soloflex 60
1 set of honeycomb grids
1 synchronous cable, 5 m
1 travel bag

10. SOLO Kit 384

51.134.00 120 V / 51.135.00 230 V

2 SOLO 400 B incl. flash tubes,
modelling lamps, protecting glasses
and grey transport protection caps,
mains cables
1 SOLO 800 B incl. flash tube, model-
ling lamp, protecting glass and grey
transport protection cap, mains cable
1 standard reflector
1 set of barn doors
1 set of honeycomb grids
1 umbrella, silver
1 umbrella reflector
1 Soloflex 60
1 synchronous cable, 5 m
1 travel bag

11. LOGOS Kit 308 BC

(not available in the USA)

51.072.00 230 V / 51.073.00 120 V

3 LOGOS 800 BC with **broncolor**
bayonet, incl. flash tubes, modelling
lamps, protecting glasses and grey
transport protection caps, mains
cables
1 reflector P-travel
1 barn doors for P-travel
1 umbrella reflector
1 umbrella silver Ø 82 cm
1 Pulsoflex C 70 x 70 cm
1 adapter ring for Pulsoflex C
1 synchronous cable, 5 m
1 travel bag

12. Car-Kit SOLO 400 B / SOLO 800 B

51.136.00 / 51.138.00 120 V

51.137.00 / 51.139.00 230 V

2 SOLOS 400 B resp. 800 B with
flash tubes, modelling lamps, protect-
ing glasses and grey transport protec-
tion caps, mains cables
2 umbrella reflectors
1 umbrella white
1 umbrella silver
1 umbrella silver Ø 82 cm
1 synchronous cable, 5 m
1 travel bag



What makes the perfect light for photography? All the right components, perfectly coordinated with one another. That's why VISATEC offers a comprehensive range of accessories that can be customised for your very specific needs. And what is true for the flash units is true here as well: VISATEC represents the highest quality and flexibility at an unbeatable price/performance ratio.

MONOBLOCS

All monoblocs with protecting glass and grey protection cap



51.130.00
SOLO 400 B
120 V/60 Hz

51.131.00
SOLO 400 B
200-240 V/50 Hz



51.010.00
SOLO 800 B
120 V/ 60 Hz

51.011.00
SOLO 800 B
230 V/50 Hz



51.102.00
SOLO 1600 B
120 V/60 Hz

51.103.00
SOLO 1600 B
230 V/50 Hz



51.104.00
SOLO 3200 B
120 V/60 Hz

51.104.01 **51.105.00**
SOLO 3200 B **SOLO 3200 B**
100 V/50 Hz 230 V/50 Hz



51.040.00
LOGOS 800
200-240 V/50 Hz
bi-voltage

51.041.00
LOGOS 800
100-120 V/60Hz



51.042.00
LOGOS 800 RFS
200-240 V/50Hz
bi-voltage

51.043.00
LOGOS 800 RFS
100-120 V/60 Hz



51.050.00
LOGOS 1600
200-240 V/50 Hz
bi-voltage

51.051.00
LOGOS 1600
100-120 V/60 Hz



51.052.00
LOGOS 1600 RFS
200-240 V/50 Hz
bi-voltage

51.053.00
LOGOS 1600 RFS
100-120 V/60 Hz



51.070.00
LOGOS 800 BC
200-240 V/50 Hz
bi-voltage

51.071.00
LOGOS 800 BC
100-120 V/60Hz

SPECIAL ACCESSORIES



56.201.00
Transmitter RFS



56.202.00
Transceiver RFS



56.302.00
Powerbox 900



56.200.00
Flash trigger



54.104.00
Sync cable, 5 m (16 ft.)

REFLECTORS AND ATTACHMENTS



53.100.00
Standard reflector



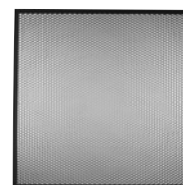
53.220.00
Barn door



53.200.00
Set of honeycomb grids
for standard reflector



53.111.00
Softlight reflector



53.201.00
Honeycomb grid for
softlight reflector

SOFTBOXES



53.406.00
Soloflex 60
60 x 60 cm
(24 x 24")



53.408.00
Soloflex 80
80 x 80 cm
(32 x 32")



53.409.00
Soloflex 100
100 x 100 cm
(40 x 40")



53.415.00
Soloflex 15 x 125
15 x 125 cm
(6 x 49")



53.417.00
Soloflex 60 x 90
60 x 90 cm
(24 x 35")



53.416.00
Soloflex 80 x 160
80 x 160 cm
(32 x 64")



53.202.00
**Fabric grid
Lighttools TM
for Soloflex 80**

EFFECT LAMP



53.122.00
Globo
UV coated acrylic glass
sphere, ø 30 cm (11.8")

LIGHT SOURCES



54.251.XX
Halogen modelling lamp
150 W/120V for SOLO 400 B/
800 B/ 1600 B/3200 B



54.254.XX
Halogen modelling lamp
150 W/120 V for
LOGOS 800/1600

54.255.XX
Halogen modelling lamp
150 W/230 V for
LOGOS 800/1600



54.300.00
Flash tube, coated
for LOGOS 800 and
SOLO 800 B

54.301.00
Flash tube, coated
for LOGOS 1600 and
SOLO 1600 B

54.302.00
Flash tube, clear
for SOLO 3200 B

54.303.00
Flash tube, coated
for SOLO 400 B



53.221.00
Barn door for
softlight reflector



53.121.00
Sunlite attachment



53.120.00
Conical snoot



53.130.00
Projection attachment
Solospot 800 B/1600 B
with flash tube, protecting glass,
gobo holder and masks



53.131.00
Gobo set (6 pcs) for Solospot
800 B/1600 B

UMBRELLAS AND STANDS



53.451.00
Umbrella, transparent



53.452.00
Umbrella, silver



53.453.00
Umbrella, sun



53.450.00
Umbrella, white



53.457.00
Umbrella reflector



55.102.00
Floor stand



55.101.00
Stand



55.103.00
XL stand

TRAVEL BAGS



54.400.59
Protecting glass, clear
for LOGOS 800/1600 and
SOLO 400 B/800 B/1600 B

54.401.00
Protecting glass, coated
for SOLO 3200 B



56.503.00
Travel bag
empty for VISATEC Kit 108



56.506.00
Travel bag
empty for VISATEC Kits
204, 208, 216

56.507.00
for VISATEC Kits
304, 308, 316, 384

56.508.00
for VISATEC Kit 232

56.509.00
for VISATEC Kit 332



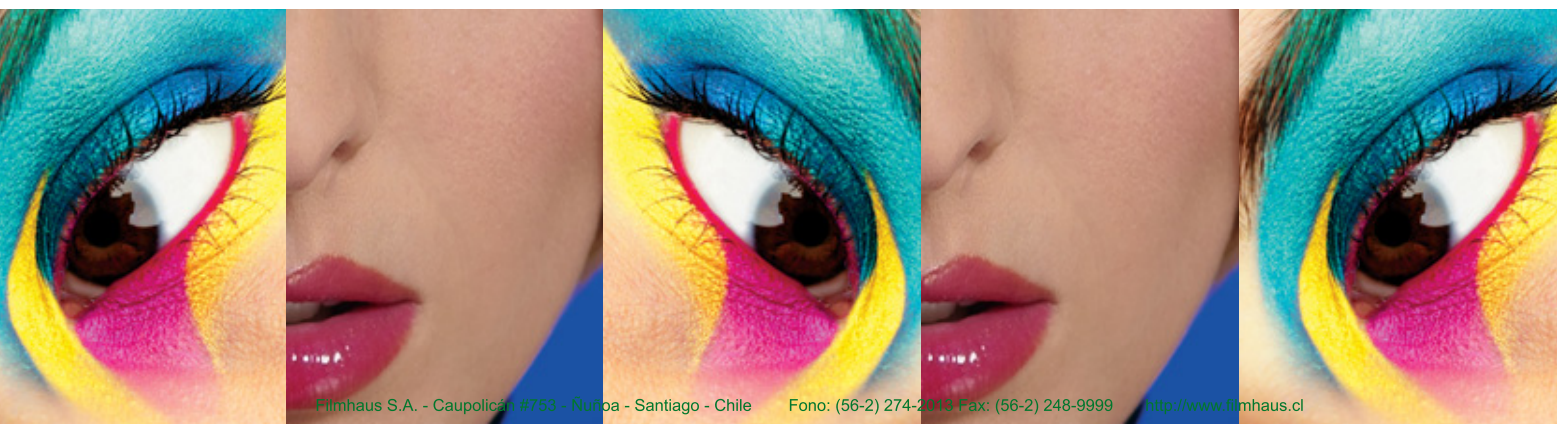
56.550.00
Bag for stands

Technical data



	SOLO 400 B	SOLO 800 B	SOLO 1600 B	SOLO 3200 B
Flash energy	130 J	300 J	600 J	1200 J
f-stop at a distance of 1 m (3.25 ft) 100 ISO, normal reflector	32	45	64	90
Flash duration t 0.5	1/200 s	1/800 s	1/600 s	1/900 s
Charging time (for 100% of selected energy), can be switched to slow charge mode	230 V/50 Hz: 0.25 – 1,1 s 120 V/60 Hz: 0.25 – 1,3 s	230 V/50 Hz: 0.6 – 1,4 s 120 V/60 Hz: 0,6 – 1,4 s	230 V/50 Hz: 0.7 – 1,9 s 120 V/60 Hz: 0.5 – 1,9 s	230 V/50 Hz: 0.6 – 2,2 s 120 V/60 Hz: 0.6 – 2,4 s
Ready display (at 100% of selected energy)	visual			
Control range (at 100% of selected energy)	3 f-stops	3 f-stops	3 f-stops (continuously)	4 f-stops (continuously)
Modelling light	Halogen 150 W			
Flash release	Synchronous cable, infrared-sensitive photocell (can be switched off), manual release button			
Reflector mount	Automatic interlocking bayonet			
Stabilized flash voltage	+/- 1%	+/- 1%	+/- 1%	+/- 1%
Power requirements	120 V, 50 – 60 Hz: 6 A 200–240 V, 50–60 Hz: 6 A	110–120 V, 60 Hz: 10 A 200–240 V, 50 Hz: 6 A	110–120 V, 60 Hz: 10 A 200–240 V, 50 Hz: 6 A	100 V, 50 Hz: 16 A 110–120 V, 60 Hz: 16 A 200–240 V, 50 Hz: 10 A
	Car battery operation via converter (without modelling light)			
Standards	EC standard 73/23, UL 122			
Dimensions (not including mount or handle)	120 x 190 x 340 mm (4,7 x 7,5 x 13,5")	120 x 195 x 410 mm (4,7 x 7,7 x 16,1")	120 x 195 x 410 mm (4,7 x 7,7 x 16,1")	120 x 195 x 495 mm (4,7 x 7,7 x 19,5")
Weight kg	2,3 (5 lbs)	2,8 (6,2 lbs)	2,9 (6,4 lbs)	4,3 kg (9,5 lbs)

Subject to change in the interest of product enhancement.
We provide a two-year factory guarantee.





	LOGOS 800	LOGOS 1600
Flash energy	300 J	600 J
f-stop at a distance of 1 m (3.25 ft) 100 ISO, normal reflector	45	64
Flash duration t 0.5	1/800 s	1/600 s
Charging time (for 100% of selected energy), can be switched to slow charge mode	230 V/50 Hz: 0,3 – 1,2 s 120 V/60 Hz: 0,3 – 1,2 s 100 V/50 Hz: 0,3 – 1,5 s	230 V/50 Hz: 0,5 – 1,9 s 120 V/60 Hz: 0,4 – 2,0 s 100 V/50 Hz: 0,4 – 3,0 s
Ready display (at 100% of selected energy)	visual and audible (can be switched off)	
Control range (continuous)	4 f-stops in 1/10 stop increments	4 f-stops
Modelling light	Halogen 150 W	
Additional functions	Sequences (serial flashes) up to 50 flashes	
Flash release	Manual release button, can be switched off, Infrared-sensitive photocell, sync cable, VISATEC flash release, transmitter RFS (RFS versions only)	
Reflector mount	Automatic interlocking bayonet	
Stabilized flash voltage	+/- 1%	+/- 1%
Power requirements	100–120 V, 50–60 Hz: 10 A 200–240 V, 50–60 Hz: 6 A	
Remote control (only RFS-versions)	By means of the 8 channel RFS interface for remote control of the unit by radio from transceiver RFS from PC or Macintosh computer. Per channel (studio), there can be controlled up to 8 units.	
Standards	EC standard 73/23, UL 122	
Dimensions (not including mount or handle)	120 x 195 x 276 mm (4,7 x 7,7 x 10,8")	120 x 195 x 276 mm (4,7 x 7,7 x 10,8")
Weight kg	2,6 (5,7 lbs)	3,1 (5,3 lbs)

Subject to change in the interest of product enhancement.
We provide a two-years factory guarantee.

Please see page 10 for technical data of the LOGOS BC.

Your VISATEC dealer:

VISATEC®
For Creative Imaging.

Bron Elektronik AG, CH-4123 Allschwil/Switzerland, www.visatec.com



Productora Audiovisual

Importación de artículos y equipos de fotografía, video y cine.

<http://www.filmhaus.cl>

Representación - Distribución - Servicio Técnico

Equipos Visatec

VISATEC®
For Creative Imaging.

Bron Elektronik AG, CH-4123 Allschwil/Switzerland, www.visatec.com

Todo el material contenido en este pdf pertenece a broncolor © 2003-08 by Bron Elektronik Ag Allschwil con todos los derechos reservados, todas las imágenes incluidas en este documento y sus copyright pertenecen a los fotógrafos mencionados. Este pdf bajo ninguna circunstancia se podrá distribuir, almacenar, transferir, reproducir, publicar o explotar total o parcialmente la información, imágenes, logotipos, textos, sin la autorización expresa de su creador, que tiene los derechos de autor y la cual se encuentra protegida por las leyes correspondientes.